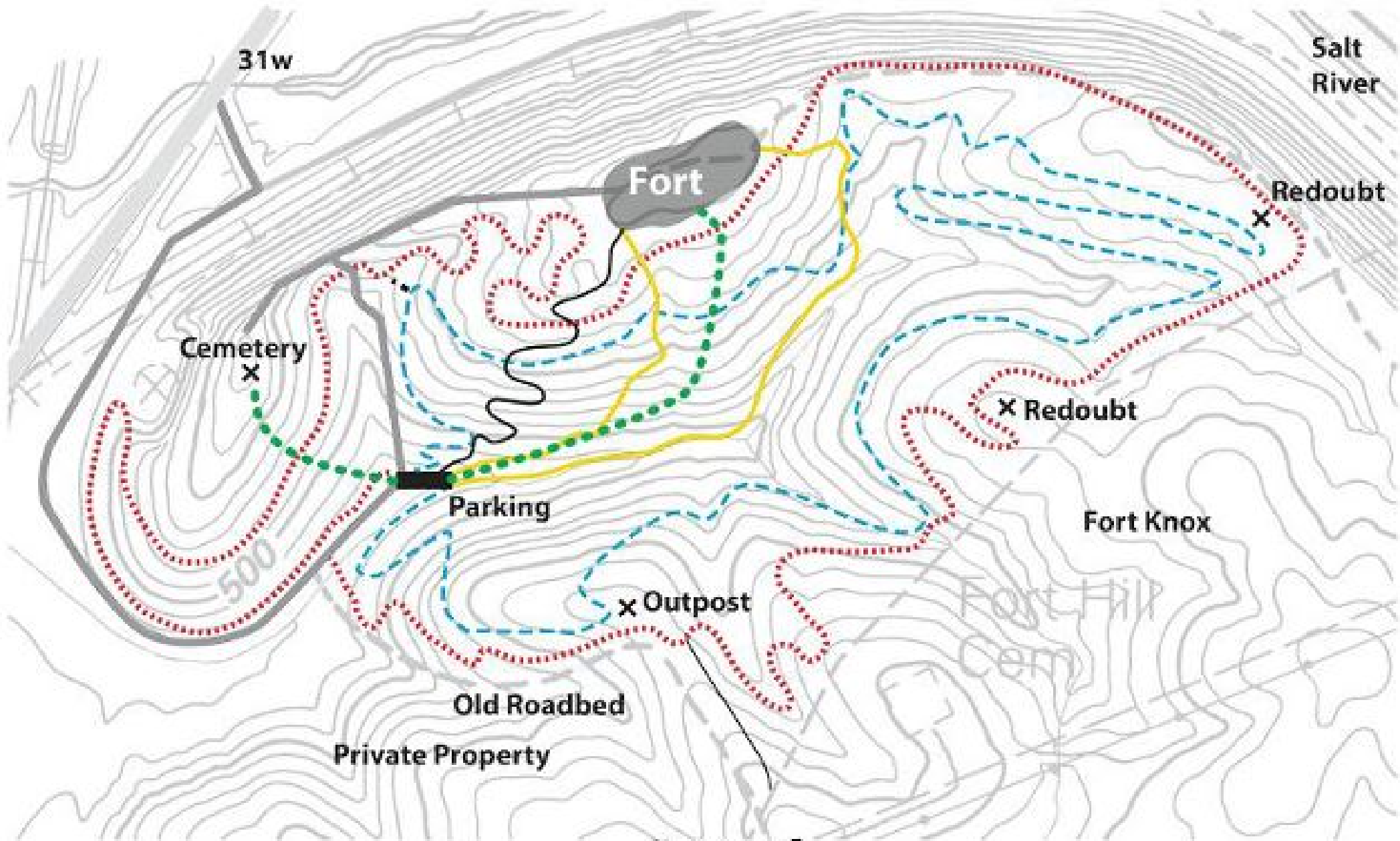


Fort Duffield Hiking & Mountain Biking Trails



Legend

- | | | |
|--------------------------|-------------------------|--------------------------------------|
| 4 mi. Red Trail | .25 mi. — Slalom Course | .25 mi. Hiking Trail (no bikes) |
| 3.5 mi. - - - Blue Trail | .75 mi. — Yellow Trail | .25 mi. — Paved Road |

Join the Friends of Fort Duffield

Friends of Fort Duffield is a volunteer support group dedicated to the preservation, interpretation and maintenance of Civil War Fort Duffield under the supervision of the Fort Duffield Heritage Committee, City of West Point, Kentucky.

Members assist with fund raising, educational programs, special events, tours, maintenance and the very future of Fort Duffield.

MEMBERSHIP FORM

Friends of Fort Duffield membership is effective January 1 of year joined. Support is renewable January 1 each year.

- \$10.00 - Individual
- \$15.00 - Family
- \$20.00 - Organization
- \$25.00 - Business

Please indicate areas of interest:

- Special Events
- Living History
- Educational Programs
- Fund Raising
- Maintenance and Restoration

Name(s) _____

Address _____

Phone _____

Email _____

Make check payable to and mail to:

Friends of Fort Duffield
16706 Abbott's Beach Rd
West Point, KY 40177

502-922-4574 • info@FortDuffield.com

Visit Fort Duffield Online:
fortduffield.com or

www.facebook.com/CivilWarFortDuffield

Welcome to Fort Duffield Park

Enjoy our scenic trails and your visit to the park by following all Park Rules:

- All bicyclists must wear helmets
- Bicyclists must yield to hikers
- No bicycles allowed inside fort
- No bicycles allowed in cemetery
- No alcohol
- No overnight camping without permission
- Park closes at dark
- No ATV's
- No rock climbing
- No metal detectors or unauthorized digging
- No horseback riding
- No hunting or discharging of live ammunition
- No unauthorized vehicles beyond the parking lot

General Information

Trails are rider rated intermediate to expert level.

Trails are singletrack with downhills, climbs, and multiple creek and log crossings.

Park restrooms are located at the west end of the fort wall.

Fort Duffield Park and Historic Site are restricted artifact recovery areas.

Fort Duffield Park trails are made possible by Friends of Fort Duffield volunteers who help develop and maintain the trails. If you would like to volunteer, contact:

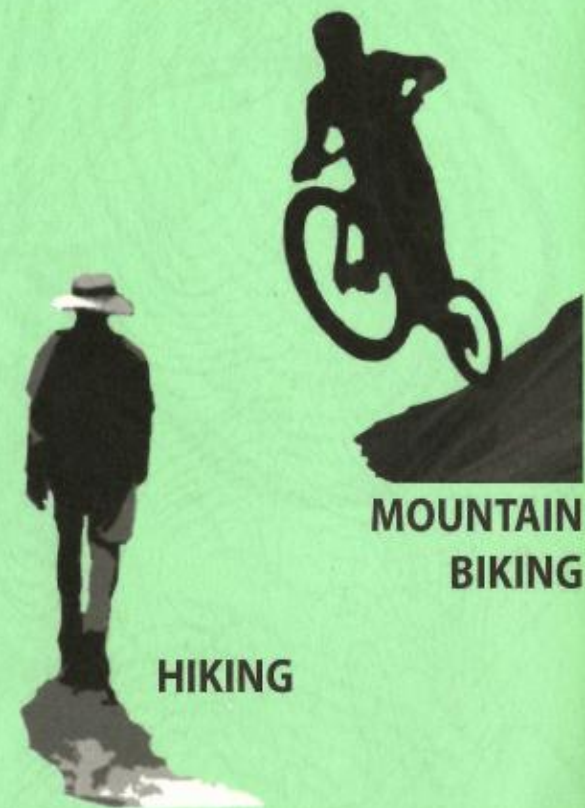
Fort Duffield Heritage Committee
volunteer@fortduffield.com or 502-594-9995

Property of the City of West Point
502-922-4260 www.westpoint.ky.gov

Trails Map

Fort Duffield Park & Historic Site

U.S. 31W & Salt River Road
West Point, Kentucky 40177



**MOUNTAIN
BIKING**

HIKING

10 Miles of Scenic Trails

**Please remember,
SAFETY FIRST**